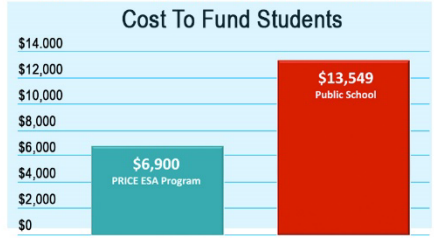


# THE PRICE IS RIGHT!

— PARENTAL RIGHTS IN CHILDREN'S EDUCATION —



## FUND STUDENTS NOT SYSTEMS



Projected spending based upon 2024-2025 school year\* Public spending is combined federal, state, local dollars. PRICE ESA Program cost from SB202/SB295 as introduced. If a student enters PRICE program the federal & local dollars stay with the school. <http://educatordata.org/public-spending-statisticsalabama>

## EDUCATION SAVINGS ACCOUNT

PRICE is a Universal Educational Savings Account program (ESA). The ESA amount is based on the average amount of state tax dollars used per pupil.

**\$6,900/STUDENT/YEAR**

Parents will be able to apply after passage of the bill (SB202/HB295) and the program will begin in the fall of 2024.

## FAMILIES DECIDE

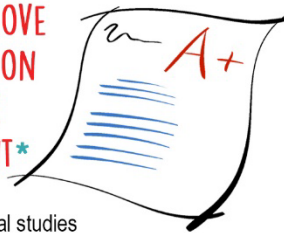
Parents are allowed to direct tax-payer dollars to education programs in pre-K and higher ed through Head Start and Pell Grants. They choose where to use those funds (public, private, religious, or non-religious institutions). They're not forced to take those funds to their residentially assigned government-run provider. PRICE applies this same logic to K-12 education funds.

All education service providers, vendors and expenses must be approved. The online app ensures that funds are used for their intended purpose while virtually eliminating the risk of fraud, waste, or abuse.

**FINANCIAL ACCOUNTABILITY AND TRANSPARENCY**

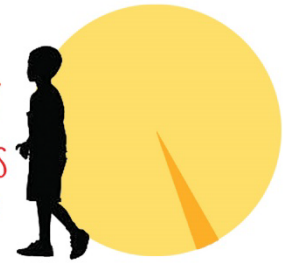
Every penny can be tracked, and audits can be done at the push of a button.

## PRICE CAN MOVE THE NEEDLE ON ACADEMIC ACHIEVEMENT\*



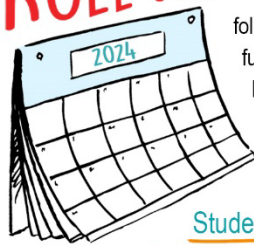
31 of 33 empirical studies find that choice improves academic outcomes at public schools. PRICE will provide the proper incentive of competition needed for our public system to improve.

## PRICE WON'T CAUSE MASS EXODUS\*



Historically accurate data shows that only **1-3%** of eligible students participate in school choice programs.

## PRICE FUNDS ROLL OVER



ESA funds not fully used in one school year will roll over into the following year. No more funds are added to the ESA after graduation, but any remaining funds can be used until the age of 21.

Students can use funds for college, trade school etc.

## PROTECTS PRIVATE & HOMESCHOOL AUTONOMY



The PRICE Act was carefully written to ensure that nothing changes the current laws regulating non-public education entities (private, church, parochial, religious, and home-based schools), including accreditation and assessments.

## PRICE DOESN'T DISCRIMINATE



All students can apply for this statewide ESA program no matter zip code, income status, ethnicity, or ability level.

## MORE PRICE FUNDS CAN BE USED FOR THAN TUITION & FEES

- |                         |                      |
|-------------------------|----------------------|
| Textbooks               | School Uniforms      |
| Individual Classes      | College Tuition      |
| Tutoring Services       | Therapies Including: |
| Athletics               | Occupational         |
| Art & Music             | Behavioral           |
| Literature              | Physical             |
| Computer Hardware       | Speech               |
| Technological Devices   | Language             |
| Software & Applications | Audiology, etc.      |



PRICE allows parents to choose the best education options that align with their family's values and are tailor-made to fit their educational needs.

## PRICE EMPOWERS PARENTS.



## REMAIN AT PUBLIC SCHOOL

\* <http://www.edchoice.org/wp-content/uploads/2016/05/A-Win-Win-Solution-The-Empirical-Evidence-on-School-Choice.pdf>  
 \* <https://www.federationforchildren.org/wp-content/uploads/2017/03/AFC-School-Choice-Research-Summary.pdf>